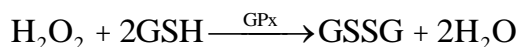


Cuvette Assay for GSH/GSSG (Reduced/Oxidized Glutathione)

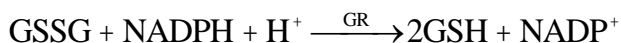
For Research Use Only

INTRODUCTION

Reduced glutathione (GSH) is a tripeptide (γ -glutamylcysteinylglycine) that contains a free thiol group. GSH is a major tissue antioxidant that provides reducing equivalents for the glutathione peroxidase (GPx) catalyzed reduction of lipid hydroperoxides to their corresponding alcohols and hydrogen peroxide to water.



In the GPx catalyzed reaction, the formation of a disulfide bond between two GSH molecules gives rise to oxidized glutathione (GSSG). The enzyme glutathione reductase (GR) recycles GSSG to GSH with the simultaneous oxidation of β -nicotinamide adenine dinucleotide phosphate (β -NADPH₂).



When cells are exposed to increased levels of oxidative stress, GSSG will accumulate and the ratio of GSH to GSSG will decrease. Therefore, the determination of the GSH/GSSG ratio and the quantification of GSSG are useful indicators of oxidative stress in cells and tissues.

PRINCIPLES OF PROCEDURE

The low concentration of GSSG (high GSH/GSSG ratio) in tissues coupled with the need to prevent GSH oxidation during sample preparation, are important considerations for the accurate measurement of GSSG and GSH/GSSG ratios. Guntherberg and Rost (2) first reported the use of N-ethylmaleimide (NEM) reacting with GSH to form a stable complex, therefore removing the GSH prior to the quantification of GSSG in tissues. Unfortunately, NEM inhibits GR. To overcome this problem, Griffith (3) employed 2-vinylpyridine (2-VP) to derivatize GSH. Although 2-VP does not significantly inhibit GR, it reacts relatively slowly with GSH and is not very soluble in aqueous solutions.

Scavenging of Free Thiols: This assay employs a pyridine derivative as a thiol-scavenging reagent thereby overcoming the shortfalls of both prior methods. At the concentration employed in the assay, this derivative reacts quickly with GSH but does not interfere with the GR activity.

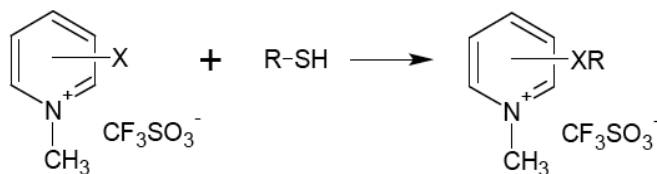


Figure 1: Reaction of the scavenger with a thiol to form a pyridinium salt

Thiol Quantification: The quantitative determination of the total amount of glutathione (GSH + GSSG) employs the enzymatic method first reported by Tietze (1). Briefly, the reaction of GSH with Ellman's reagent (5,5'-dithiobis-2-nitrobenzoic acid (DTNB)) gives rise to a product that can be quantified

spectrophotometrically at 412 nm. This reaction is used to measure the reduction of GSSG to GSH. The rate of the reaction is proportional to the GSH and GSSG concentration.

MATERIALS PROVIDED

Component	Description	Volume	Storage	Cat no.
2x Assay Buffer	2x General buffer used to dilute samples and reagents	125 mL	4°C	GT35a
Standard	10 μ M GSSG standard working solution	2 mL	-20°C	GT35b
Scavenger	Thiol scavenger to keep GSSG in its oxidized form	3.0 mL	4°C	GT35c
DTNB	Lyophilized 5,5'-dithiobis-2-nitrobenzoic acid	4 vials	4°C	GT35d
5% MPA	Metaphosphoric acid solution used to deproteinate samples	40 mL	4°C	GT35e
Reductase	Recombinant glutathione reductase	130 μ L	-20°C	GT35f
NADPH	Lyophilized β -nicotinamide adenine dinucleotide phosphate	4 vials	-20°C	GT35g

MATERIALS NEEDED BUT NOT PROVIDED

1. Spectrophotometer with 412 or 405 nm filter and kinetic reading capabilities
 2. Spectrophotometric cuvettes with a 1 cm optical path length (glass or polystyrene).
 3. Microcentrifuge capable of 1000 x g or greater
 4. Polypropylene microcentrifuge tubes
 5. Adjustable micropipettes
-

STORAGE

1. Store the components of this kit at the temperatures specified on the labels.
 2. Unopened reagents are stable until the indicated kit expiration date.
-

WARNINGS AND PRECAUTIONS

1. Use aseptic technique when opening and dispensing reagents.
 2. This kit is designed to work properly as provided and instructed. Additions, deletions or substitutions to the procedure or reagents are not recommended, as they may be detrimental to the assay.
-

PROCEDURAL NOTES

1. If a spectrophotometer with a 412 nm filter is not available, a 405 nm filter will be adequate.
 2. Reagents can be used immediately upon removal from refrigeration, excluding the 2x Assay Buffer (See **REAGENT PREPARATION**).
 3. To minimize errors in absorbance measurements due to handling, wipe the exterior of the cuvette with a lint-free paper towel prior to inserting into the spectrophotometer.
 4. The reagents of this kit are provided to conveniently assay 25 samples at a time.
 5. For quantitative purposes, a standard curve should be used each time the assay is run.
-

SAMPLE COLLECTION AND STORAGE

The following steps are for whole blood samples. See **NOTES REGARDING SAMPLES** for additional information regarding the use of whole blood and guidelines for using other sample types.

GSSG Sample:

1. Add 30 μ L of Scavenger to a microcentrifuge tube.
2. Carefully add 100 μ L of whole blood to the bottom of the centrifuge tube and mix gently.
3. Freeze sample at -70°C; it is stable for at least 30 days.

GSH Sample:

1. Carefully add 50 μ L of whole blood to the bottom of a microcentrifuge tube.
2. Freeze the sample at -70°C ; it is stable for at least 30 days.

NOTES REGARDING SAMPLES:

Freezing Step: Freezing and thawing will lyse the red blood cells and maximize the concentration of GSSG in the sample.

Frozen Samples: Blood samples that have been frozen without prior treatment with the Scavenger are not ideal for the GSSG assay, although the Scavenger can be added to frozen samples before they thaw. This will result in a reduction of GSSG and an increase in GSH in the sample.

GSH Linearity: Because GSH is present at high concentrations in whole blood, the whole blood sample should be diluted significantly (typically $> 1:200$) in order to obtain a linear reaction rate.

Sample Stability: Glutathione and oxidized glutathione are relatively stable in intact “resting” cells for up to 24 hr at 4°C . The stability of “elevated” GSSG in the intact red blood cell has not been determined. It is recommended that blood samples be treated with the Scavenger as soon as possible and frozen immediately. Upon disruption of the cell, GSH is rapidly oxidized. Therefore, to minimize the *in vitro* oxidation of GSH to GSSG, the Scavenger should be added to the sample prior to lysis or homogenization.

Tissue Samples: The quantification of the GSH/GSSG ratio in tissue samples has not been thoroughly studied using this specific protocol and may vary depending on tissue or cell culture conditions. The following issues need to be considered when preparing tissue samples for analysis:

1. GSH oxidation occurs rapidly *in vitro* in disrupted tissues. The Scavenger should therefore be added as quickly as possible.
2. GSSG diffusion from the cells during sample preparation may result in underestimating the GSSG concentration. This should not be a major issue except for extensively washed cell preparations.
3. γ -Glutamyltranspeptidase, a membrane bound enzyme expressed at high levels in kidney, pancreas, ciliary body, choroids plexus, intestinal epithelia, bile duct, lymphoid and many tumor cells, metabolizes GSH (5), thereby reducing the levels measured by this assay, with the level of reduction dependent on time, temperature and the sample preparation protocol.

Normal Plasma: The amount of GSSG present in normal resting plasma is at or below the lowest level of detection for the assay.

Urine Samples: The amount of GSSG present in urine is not detectable.

SAMPLE PREPARATION

GSSG Sample:

1. Thaw the GSSG sample (130 μ L), mix immediately, and incubate at room temperature for 5-10 minutes.
2. Add 270 μ L of ice-cold 5% MPA to the tube and vortex briefly. (Dilution Factor = 4)
3. Centrifuge at 1000 x g and 4°C for 10 minutes.
4. Add 50 μ L of the supernatant to 700 μ L of Assay Buffer in a new microcentrifuge tube. (Dilution Factor = 15, therefore making the final Dilution Factor = 60)
5. Place the diluted extract on ice until use.

GSH Sample:

1. Thaw the GSH sample (50 μ L) and mix immediately.
2. Add 350 μ L of ice-cold 5% MPA to the microcentrifuge tube and vortex briefly. (Dilution Factor = 8)
3. Centrifuge at 1000 x g and 4°C for 10 minutes.

4. Add 25 μL of the supernatant to 1.5 mL of Assay Buffer in a new microcentrifuge tube. (Dilution Factor = 61, therefore making the final Dilution Factor = 488)
5. Place the diluted extract on ice until use.

REAGENT PREPARATION

1. **2x Assay Buffer:** Warm 2x Assay Buffer to room temperature prior to dilution. Dilute 125 mL of 2x Assay Buffer with 125 mL of dH_2O , for a total volume of 250 mL 1x solution.
2. **NADPH:** Reconstitute contents of the vial with 500 μL of Assay Buffer. Add this to 5.5 mL of Assay Buffer and vortex. Leave on ice.
3. **Reductase:** Add 30 μL of Reductase to 6 mL of Assay Buffer. Leave on ice.
4. **DTNB:** Reconstitute contents of the vial with 500 μL of Assay Buffer. Add this to 5.5 mL of Assay Buffer and vortex. Leave at room temperature.

STANDARD CURVE PREPARATION

Set up for the standard curve by labeling dilution tubes and dispensing the indicated volumes of Assay Buffer and 10 μM GSSG Standard Stock according to Table 1 below.

Note: The standard curve may be stored at 4°C upon dilution.

Table 1: Standard Curve Preparation

Standard	GSH Concentration (μM)	GSSG Concentration (μM)	Assay Buffer (μL)	Volume of 10 μM GSSG Stock (μL)	Final Volume (μL)
S7	3.0	1.5	850	150	1000
S6	2.0	1.0	900	100	1000
S5	1.5	0.75	925	75	1000
S4	1.0	0.50	950	50	1000
S3	0.5	0.25	975	25	1000
S2	0.25	0.125	987.5	12.5	1000
S1	0.10	0.05	995	5	1000
B0	0.0	0.0	1000	-	1000

ASSAY PROCEDURE

1. Add 200 μL of the standards, samples, or blank to the cuvette.
2. Add 200 μL of the DTNB Solution to the cuvette.
3. Add 200 μL of the Reductase Solution to the cuvette.
4. Mix and incubate at room temperature for 5 minutes.
5. Add 200 μL of the NADPH Solution to the cuvette.
6. Record the change of absorbance at 412 nm by taking readings every minute for 10 minutes. If a kinetic spectrophotometer is not available, take a reading at zero minutes and another at 10 minutes. A 405 nm filter will also work if a 412 nm is not available.

CALCULATIONS

1. Rate Determination (Mean V):

The change in absorbance, or optical density (OD), is a linear function of the GSH concentration in the reaction mixture. It is described by the following linear regression equation (in the form of $y=mx+b$) in which the slope of the regression equation is equal to the rate:

$$\text{OD} = \text{Slope} \times \text{Minutes} + \text{Intercept}$$

The y-intercepts for these rate curves should not be used because they are dependent on the DTNB background and the time interval between the addition of the NADPH (start of the reaction) and the first recorded measurement. Examples are provided below for the determination of total GSH (GSH + GSSG in the absence of the thiol scavenger) and GSSG (determined with use of the thiol scavenger) by linear regression analysis using the equation given above.

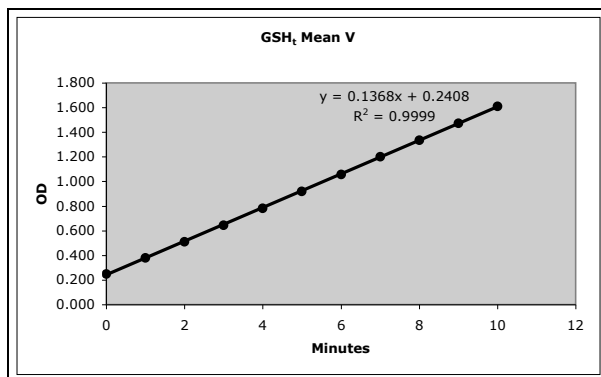


Figure 5: Reaction rate for an untreated sample. The rate is proportional to the concentration of GSH_t.

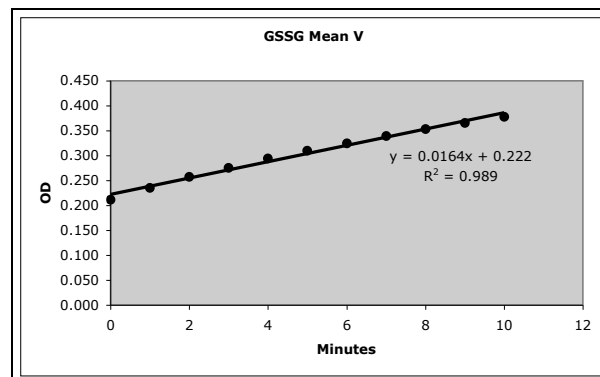


Figure 6: Reaction rate for a M4VP treated sample. The rate is proportional to the concentration of GSSG.

GSH_t: $OD = 0.1368 \times \text{Minutes} + 0.2408$. Therefore, the rate for the GSH_t sample is 0.1368.

GSSG: $OD = 0.0164 \times \text{Minutes} + 0.222$. Therefore, the rate for the GSSG sample is 0.0164.

2. Calibration Curves:

The GSH/GSSG assay uses an eight-point standard curve for both GSH_t and GSSG determinations. For each concentration of GSH, the Net Rate is the difference between the sample or standard rate and the blank (B₀) rate.

Table 2: Sample Standard Curve

Standard	μM GSH	μM GSSG	Rate	Net Rate
B ₀	0.00	0.00	0.0128	0
S ₁	0.10	0.05	0.0176	0.0048
S ₂	0.25	0.125	0.0259	0.0131
S ₃	0.50	0.25	0.0407	0.0279
S ₄	1.0	0.50	0.0665	0.0537
S ₅	1.5	0.75	0.0928	0.0800
S ₆	2.0	1.0	0.1157	0.1029
S ₇	3.0	1.50	0.1635	0.1507

Because the concentration of GSSG is much lower in the reaction mixture compared to GSH_t, it is recommended that selected data ranges from the calibration curve be plotted separately. For GSH_t, perform linear regression on a three-point curve using the 0, 0.50, 0.75, 1.0, and 1.50 μM GSSG (0, 1.0, 1.5, 2.0, and 3.0 μM GSH) data points (Figure 7). In the case of GSSG, use the 0, 0.05, 0.125, and 0.25 μM GSSG data points (Figure 8). Please see next page for figures.

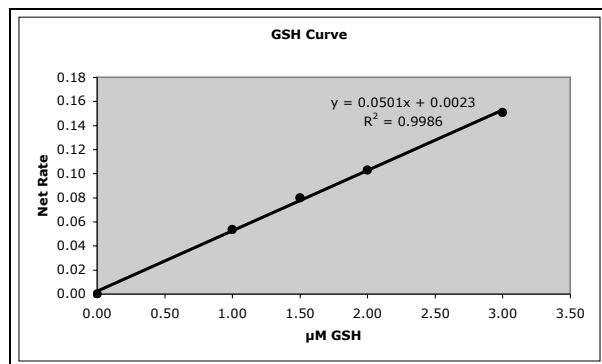


Figure 7: A five-point calibration curve of Net Rate vs. μM GSH used to determine the concentration of GSH_t .

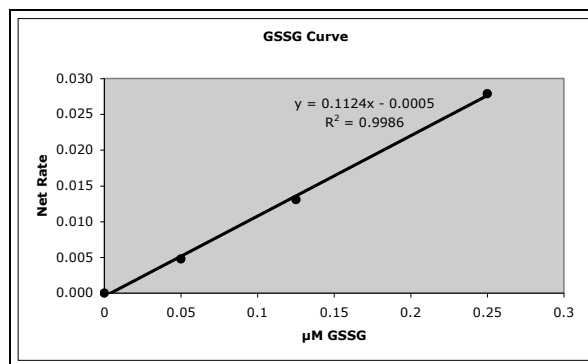


Figure 8: A four-point calibration curve of Net Rate vs. μM GSSG used to determine the concentration of GSSG.

3. GSH_t and GSSG Concentrations:

The general form of the regression equation describing the calibration curve is:

$$\text{Net Rate} = \text{Slope} \times \text{GSH} + \text{Intercept}$$

Therefore, to calculate the total GSH (GSH_t) or GSSG concentration from the GSH calibration curve:

$$\text{GSH} = \frac{\text{Net Rate} - \text{Intercept}}{\text{Slope}} \cdot \text{Dilution Factor}$$

For example, in the experiment depicted in Figure 5, the net rate of change for the GSH_t sample is $0.1368 - 0.0128$ or 0.124 . Using the calibration curve shown in Figure 7, the GSH_t can be calculated as follows:

$$\text{GSH}_t = \frac{0.124 - 0.0023}{0.0501} \cdot 488 = 1185.4 \mu\text{M}$$

Similarly, from the rate of change for the GSSG sample in Figure 6 is $0.0164 - 0.0128$ or 0.0036 . Using the calibration curve shown in Figure 8, the GSSG concentration can be calculated as shown below. Note the dilution factor correction that accounts for the conversion of GSH to GSSG; 60-fold dilution divided by 2 GSH molecules per GSSG molecule.

$$\text{GSSG} = \frac{0.0036 - 0.0005}{0.1124} \cdot 30 = 1.094 \mu\text{M}$$

4. GSH/GSSG Ratio:

The GSH/GSSG Ratio is calculated by dividing the difference between the GSH_t and GSSG concentrations by the concentration of GSSG.

$$\text{Ratio} = \frac{\text{GSH}_t - 2\text{GSSG}}{\text{GSSG}}$$

The GSH/GSSG ratio for the sample data is:

$$\text{Ratio} = \frac{1185.42 - 2(1.094)}{1.094} = 108.5$$

REFERENCES

1. Tietze, F., (1969) *Analytical Chemistry* 27, 502-520.
2. Guntherberg, H. and Rost, J., (1966) *Analytical Biochemistry* 15, 205-210.
3. Griffith, O.W., (1980) *Analytical Biochemistry* 106, 207-212.
4. Richie, J.P. Jr., et al, (1996) *Clinical Chemistry* 42, 64-70.
5. Anderson, M., (1996) *Glutathione in Free Radicals, A Practical Approach*, 213.

DISCLAIMER

This information is believed to be correct but does not purport to be all-inclusive and shall be used only as a guide. Oxford Biomedical Research, Inc. shall not be held liable for any damage resulting from handling or from contact with the above product. See catalog for additional terms and conditions of sale.

ORDERING INFORMATION

For additional kits or a complete catalog please call 800-692-4633.

TECHNICAL SUPPORT

If you need technical information or assistance with assay procedures, call our Technical Support Department at 800-692-4633 or 248-852-8815. Our staff will be happy to answer your questions about this or any other product in the Oxford Biomedical line.

GUARANTEE AND LIMITATION OF REMEDY

Oxford Biomedical Research, Inc. makes no guarantee of any kind, expressed or implied, which extends beyond the description of the materials in this kit, except that these materials and this kit will meet our specifications at the time of delivery. Buyer's remedy and Oxford Biomedical Research, Inc.'s sole liability hereunder is limited to, at Oxford Biomedical Research, Inc.'s option, refund of the purchase price of, or the replacement of, material that does not meet our specification. By acceptance of our products, Buyer indemnifies and holds Oxford Biomedical Research, Inc. harmless against, assumes all liability for the consequence of its use or misuse by the Buyer, its employees, or others. Said refund or replacement is conditioned on Buyer notifying Oxford Biomedical Research, Inc. within thirty (30) days of the receipt of product. Failure of Buyer to give said notice within thirty (30) days of receipt of product shall constitute a waiver by the Buyer of all claims hereunder with respect to said material(s).

Oxford Biomedical Research, Inc.
P.O. Box 522
Oxford, MI 48371 U.S.A.

Orders: 800-692-4633
Technical Service: 248-852-8815
Fax: 248-852-4466
E-mail: info@oxfordbiomed.com

Made in the U.S.A.